

INVESTOR FACT SHEET



SUME ISLAND

Zanzibar, Tanzania



ABOUT

Sume Island

Sume Island, approximately 1.5 ha in size, is located on the south-central part of Zanzibar, Tanzania and about 2.5km from Fumba, a village southwest of Unguja. The islet features a natural rock formation that encompasses the entire island. Locals sometimes refer to it as Sumi Island. Its coordinates are 6° 19'0" S and 39° 19'0" E in DMS (Degrees Minutes Seconds) or -6.31667 and 39.3167 (in decimal degrees).

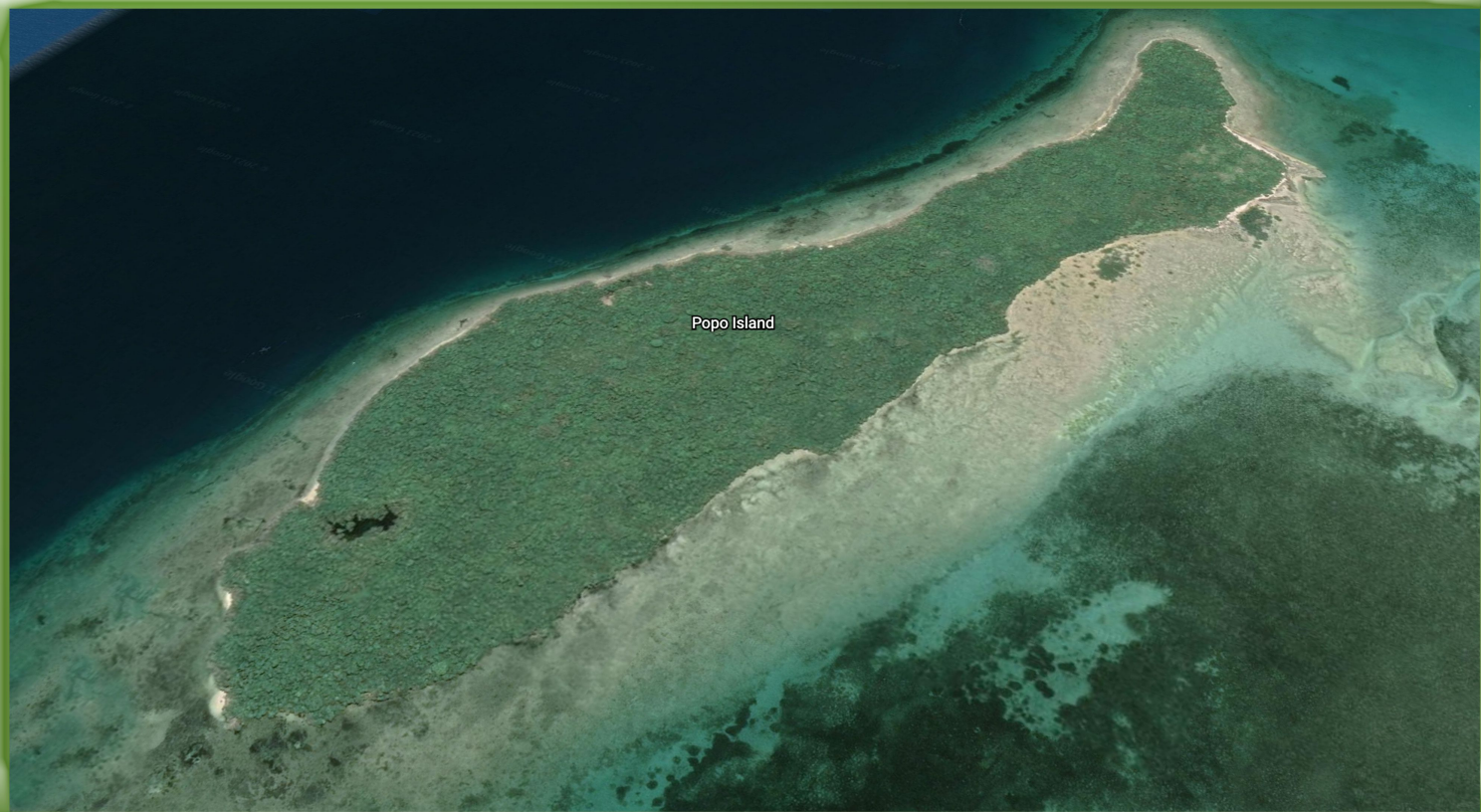
FEATURES:

- Rock formations, natural lagoon, natural forest
- Fertile soil and marine biodiversity
- The island can be travelled to year - round by boat. Airlift permission can also be obtained. Cellular network coverage is available on the island.



POPO ISLAND

Zanzibar, Tanzania



ABOUT

Popo Island

Popo Island is approximately 41ha in size and is located east of Tumbatu Island on the northern side of Unguja. The island is approximately 6km from Mkokotoni, the capital of the Zanzibar North region. The islet does not inhabit any people, and is currently being used for agricultural purposes. The islet boasts a spectacular beach that lies on its southwestern side. Its coordinates are $5^{\circ}49'0''$ S and $39^{\circ}15'0''$ E in DMS (Degrees Minutes Seconds) or -5.81667 and 39.25 (in decimal degrees).

FEATURES:

- The area has natural vegetation and fertile soil with abundant trees
- The area is located in a marine reserve with beaches, coral and rock
- The island can be travelled to year - round by boat. Airlift permission can also be obtained. Cellular network coverage is available on the island.

INVESTOR FACT SHEET



MIWI ISLAND

Zanzibar, Tanzania



ABOUT

Miwi Island

Miwi Island covers an area of approximately 37ha, on the south-central part of Zanzibar, Tanzania. The islet is about 6 km from Fumba, a village southwest of Unguja. The island is charmingly beautiful with spectacular ocean landscapes, an abundant marine life, white sandy beaches, corals and a natural forest. Its coordinates are 6°21'0" S and 39°19'60" E in DMS (Degrees Minutes Seconds) or -6.35 and 39.3333 (in decimal degrees).

FEATURES:

- Beautiful ocean landscape, snorkeling and diving, natural forest, fertile soil
- Coral reefs, various species of animals, and marine biodiversity
- The island can be travelled to year - round by boat. Airlift permission can also be obtained. Cellular network coverage is available on the island



NJAO ISLAND

Zanzibar, Tanzania

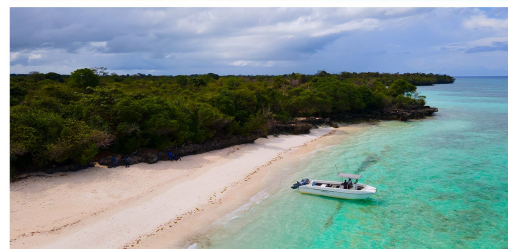
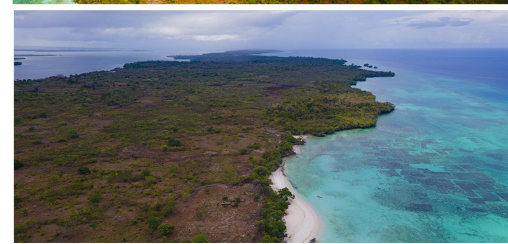
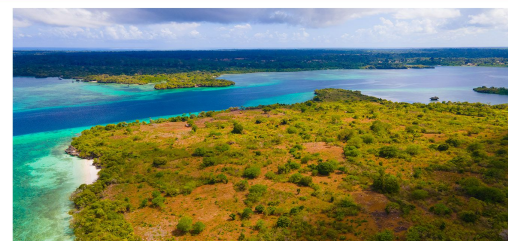


ABOUT

Njao Island

Njao Island, approximately 474ha in size is located off the northwest coast of Pemba Island, Tanzania and about 6km from Gando. The islet is located in a Marine Park with natural vegetation and features areas of stone land at the top part of the island. A portion of Njao is currently used for housing, agriculture and animal husbandry.

The island boasts a stunning beach that attracts tourists year round. Its coordinates are 4° 57' 0" S and 39° 40' 0" E in DMS (Degrees Minutes Seconds) or -4.95 and 39.6667 (in decimal degrees).



FEATURES:

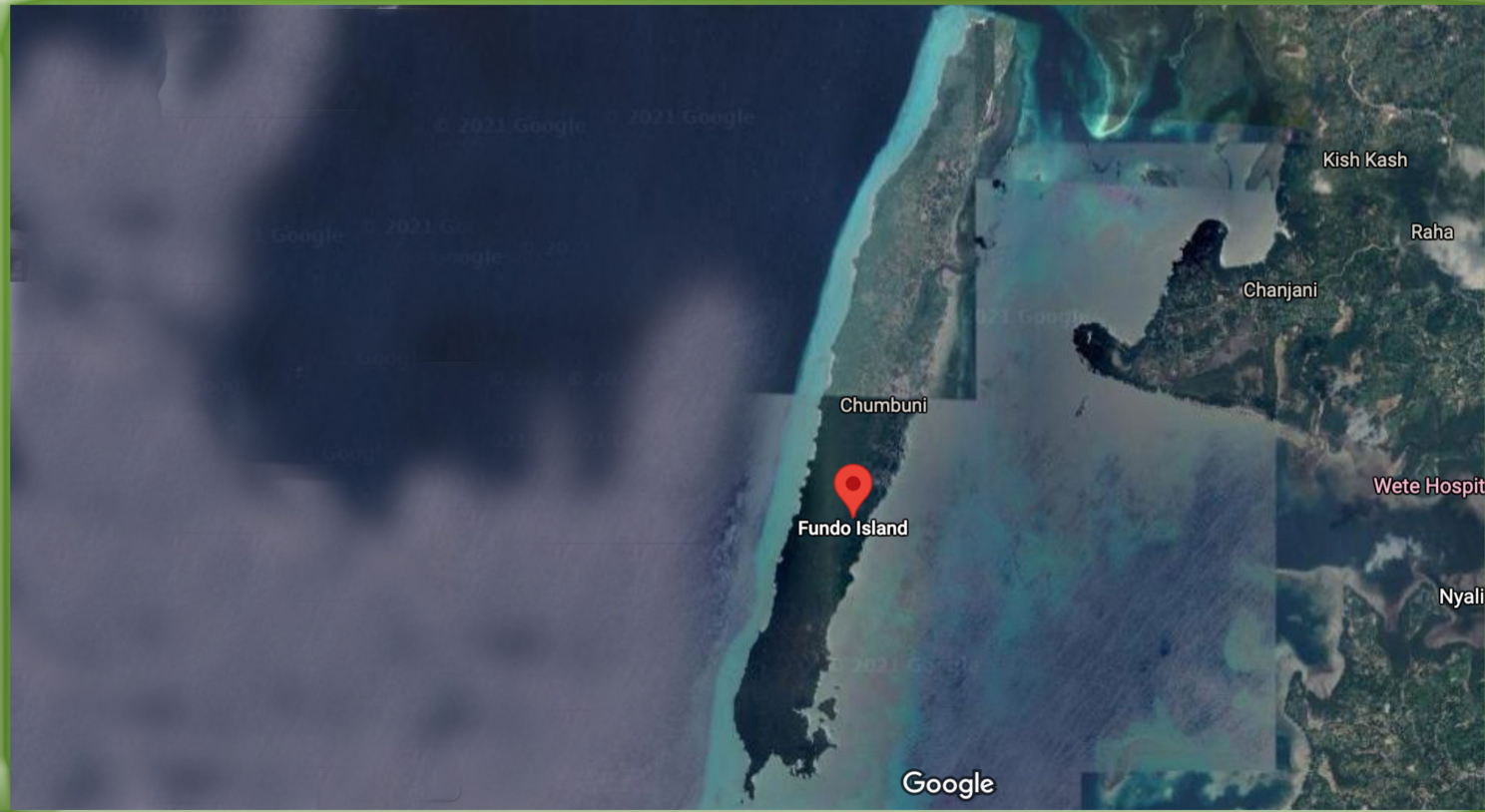
- White sand beach, natural forest, colourful coral reef, diving site.
- The island can be travelled to year - round by boat. Airlift permission can also be obtained. Cellular network coverage is available on the island

INVESTOR FACT SHEET



FUNDO ISLAND

Zanzibar, Tanzania



ABOUT

Fundo Island

Fundo Island covers an area of around 837ha and is located off the north region of Pemba, Tanzania. The distance from Gando to Fundo is approximately 6km. The main activities of the island's residents are fishing and agriculture, because of the fertile soil surrounding the island. The island boasts five beautiful beaches, a natural forest, a thriving coral reef where fish breed and an abundance of animals such as bats, monkeys and snakes. Its coordinates are 5°3'0" S and 39°39'0" E in DMS (Degrees Minutes Seconds) or -5.05 and 39.65 (in decimal degrees).

FEATURES:

- Idealic beaches, natural forest, colourful coral reefs
- Deep water sea levels for diving
- The island can be travelled to year - round by boat. Airlift permission can also be obtained. Cellular network coverage is available on the island

INVESTOR FACT SHEET



JOMBE ISLAND

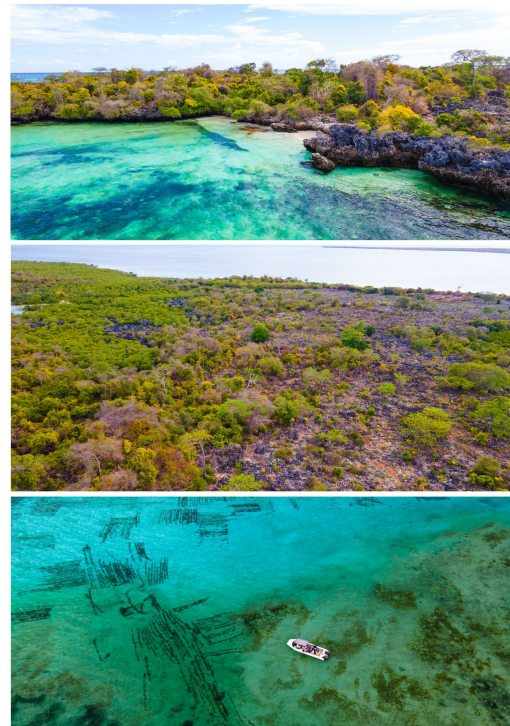
Zanzibar, Tanzania



ABOUT

Jombe Island

Jombe Island is located off the south region of Pemba, Tanzania and covers an area of approximately 28ha. The islet is 4km from Chokocho and has no residents. Agriculture is the main activity for people living on the neighbouring island of Panza. The island is surrounded by rock, beaches and stone land and some areas are used for farming. The island boasts a natural forest with stone formations and mangrove trees, protecting it from climate impacts. Its coordinates are 5°28'0" S and 39°40'0" E in DMS (Degrees Minutes Seconds) or -5.46667 and 39.6667 (in decimal degrees).



FEATURES:

- Spectacular white sandy beach, natural forest, beautiful coral reefs
- Shallow water, fertile soil, mangrove trees, rock formations
- The island can be travelled to year - round by boat. Airlift permission can also be obtained. Cellular network coverage is available on the island

INVESTOR FACT SHEET



KWATA ISLAND

Zanzibar, Tanzania



ABOUT

Kwata Island

Kwata Island is located off the south region of Pemba, Tanzania, covering an area of about 28ha. The distance from Chokocho to Kwata island is approximately 4km and it does not inhabit people. It is frequently visited by foreign tourists and locals to enjoy its white sandy beach, various bird species and unusually deep waters for swimming. Its coordinates are 5°22'0"S and 39°34'60" E in DMS (Degrees Minutes Seconds) or -5.36667 and 39.5833 (in decimal degrees).



FEATURES:

- The island boasts a beautiful beach and large rock formations
- Trees such as baobabs can be found on the island
- The island can be travelled to year - round by boat. Airlift permission can also be obtained. Cellular network coverage is available on the island

INVESTOR FACT SHEET



KASHANI ISLAND

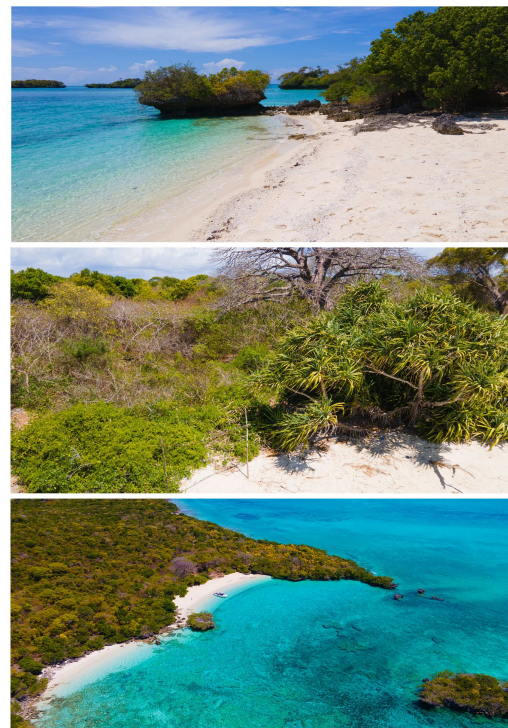
Zanzibar, Tanzania



ABOUT

Kashani Island

Kashani Island covers an area of around 28ha, and is located off the north of Pemba, Tanzania and does not inhabit any people. Kashani is approximately 15km from Wete Port. The main activities on the island are fishing and agriculture. On the south side, the island boasts a stunning white sandy beach, frequented by tourists. Its coordinates are Latitude: $-5^{\circ}22'0.01''$ and Longitude: $39^{\circ}34'59.98''$.



FEATURES:

- Natural vegetation that includes a variety of trees such as baobabs
- The area is located in a marine reserve, with a white sandy beach
- Natural forest, beautiful coral reefs
- The island can be travelled to year - round by boat. Airlift permission can also be obtained. Cellular network coverage is available on the island

INVESTOR FACT SHEET



MATUMBINI A ISLAND

Zanzibar, Tanzania

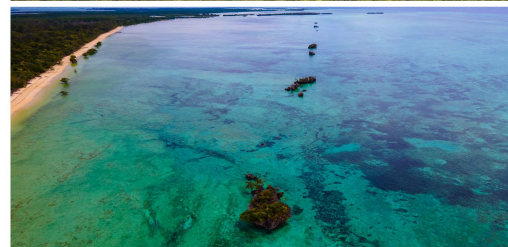


ABOUT

Matumbini A Island

Matumbini Island is located off the south region of Pemba, Tanzania. Covering an area of approximately 400ha. Matumbini is 17km from Mkoani Port. The island features a long, spectacular beach and large social forest with a variety of shrubs. The island also features an abundant mangrove population to the east.

Its coordinates are 5°27'0" S and 39°36'0" E in DMS (Degrees Minutes Seconds) or -5.45 and 39.6 (in decimal degrees).



FEATURES:

- Large rock formations close to the island
- The area is located in a marine reserve with stunning beaches and corals
- The island can be travelled to year - round by boat. Airlift permission can also be obtained. Cellular network coverage is available on the island